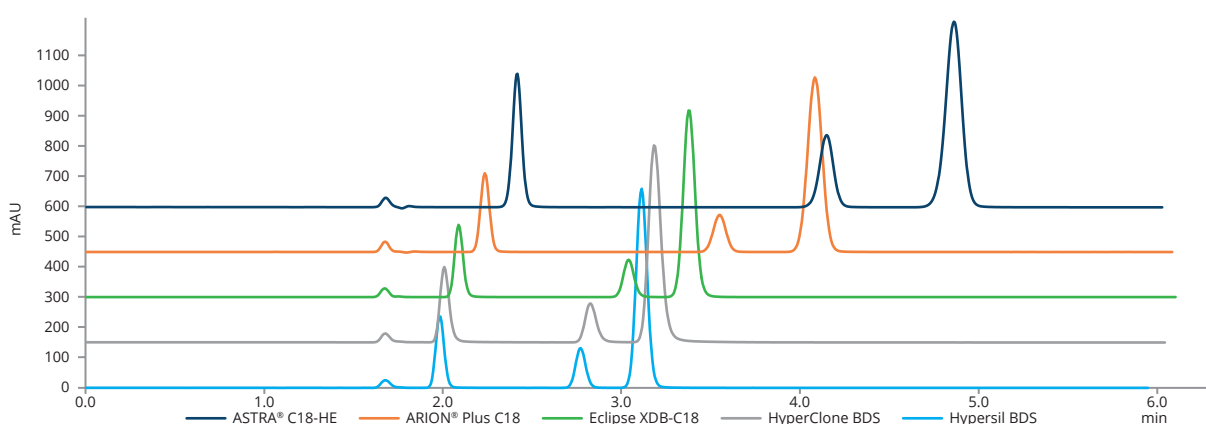


Selected C18 phases comparison

This application shows a selectivity comparison of different C18 phases on QC mixture. It compares the hydrophobicity parameter of ARION® and ASTRA® HPLC columns with selected columns from other manufacturers.



CRM analysis on all columns

Columns	ASTRA® C18-HE, 5 µm, ARION® Plus C18, Eclipse XDB-C18, HyperClone BDS, Hypersil BDS
Dimensions	150 m × 4.6 mm (for all columns)
Mobile phase	Water:Methanol Isocratic elution 15:85 – A:B (v/v)
Flow rate	1.0 ml/min
Temperature	25 °C
Detection	UV @284 nm
Injection volume	1.0 µl
Analytes	Peak No. 1: Uracil Peak No. 2: Acetophenone Peak No. 3: Toluene Peak No. 4: Naphthalene

Note: The chromatogram X-axis corresponds to the first chromatogram (Hypersil BDS). The chromatogram Y-axis corresponds to the first chromatogram (Hypersil BDS). All retentions are compared based on the Uracil peak (dead volume).